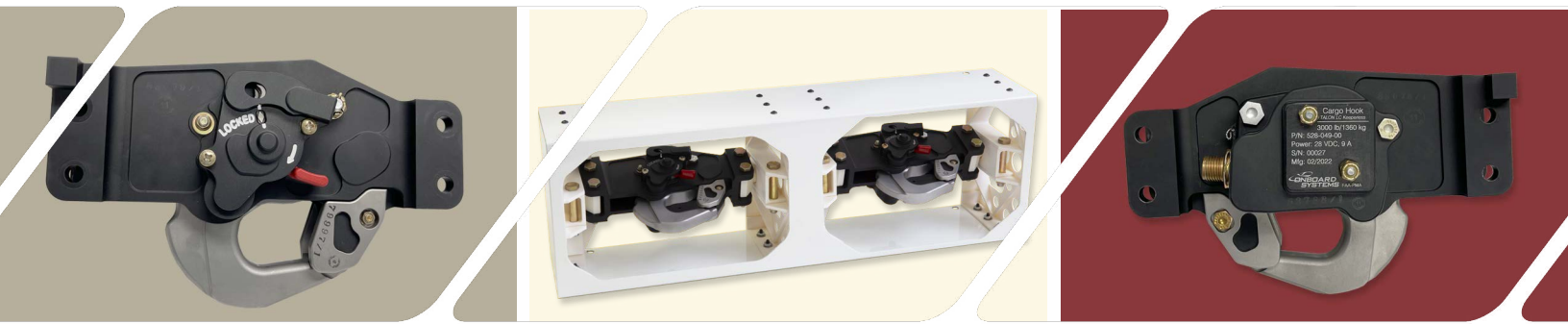




Airbus EC135 TALON® LC Keeperless HEC Dual Cargo Hook Replacement Kit



Provides an STC-certified solution for external load missions, including HEC

HEC Dual Hook Replacement Kit for the EC135

Operators who fly the Airbus EC135 as part of their fleet are generally concerned about the high cost and long lead times for overhauling the factory-installed cargo hooks on these aircraft. In 2012, Onboard Systems developed an STC-certified replacement hook kit for EC135 aircraft equipped with the single-hook configuration. That kit features a unique version of the TALON® LC Keeperless Cargo Hook that was modified to match the housing geometry and mounting interface for the EC135 aircraft.

In response to continuing requests from EC135 operators equipped with the HEC dual-hook configuration, Onboard has applied its success with developing HEC-certified dual cargo hook kits for other aircraft toward the creation of a certified HEC dual cargo hook replacement kit for the EC135. Our TALON LC Replacement Dual Cargo Hook Kit for the EC135 provides an STC-certified solution for a variety of external load missions, including HEC, high-value cargo transport, utility line work, short haul, and search & rescue.

Program details

Aircraft Models — Onboard’s dual hook replacement kit has been certified for installation on aircraft models EC135P1, EC135T1, EC135P2, EC135T2, EC135P2+, EC135T2+, and EC135P3 & T3’s (without Helionix).

Installation Requirements — The kit replaces the original system cargo hook, the manual release cables, and the electrical release harnesses (from the cargo hooks to the connector bracket on the belly) within an existing HEC-approved system. Onboard’s kit utilizes the existing Airbus beam, internal primary quick release subsystem, and the backup quick release subsystem, greatly simplifying installation of the replacement hook kit.

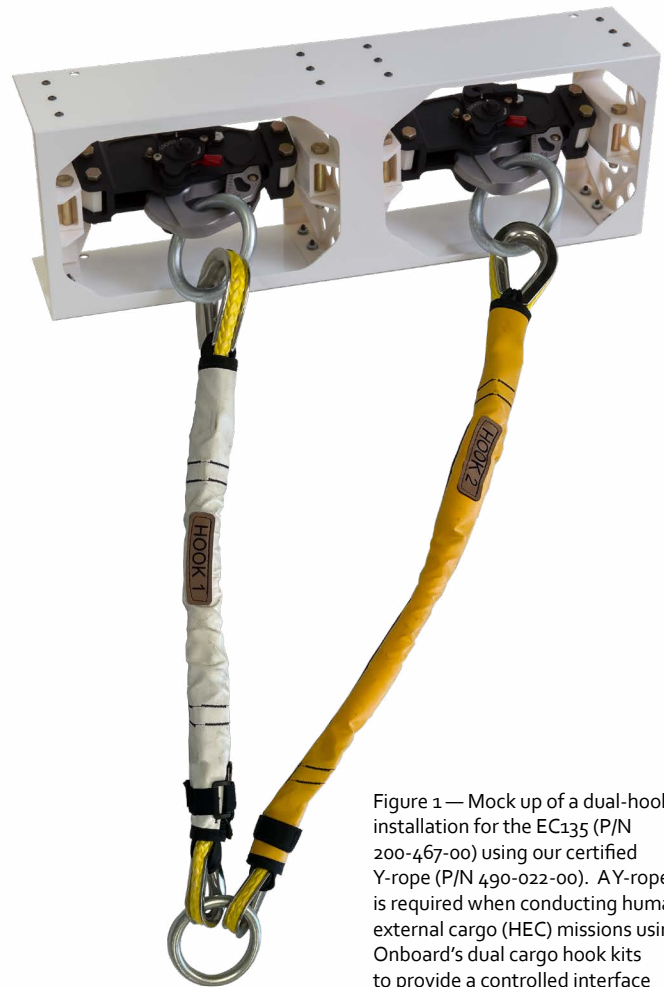


Figure 1 — Mock up of a dual-hook installation for the EC135 (P/N 200-467-00) using our certified Y-rope (P/N 490-022-00). AY-rope is required when conducting human external cargo (HEC) missions using Onboard’s dual cargo hook kits to provide a controlled interface between the two cargo hooks and the longline.

Table 1: EC135 Replacement Dual Hook Kit Specifications

Part Number	200-467-00
Primary Hook Load (NHEC)	2,205 lb. (1,000 kg)
Secondary Hook Load (HEC)	1,323 lb. (600 kg)
Unit Weight	8 lb. (3.6 kg)
Typical Overhaul	5 years/1,000 hours

Table 2: EC135 Y-Rope Specifications

Part Number	490-022-00
Primary Hook Load (NHEC)	2,205 lb. (1,000 kg)
Secondary Hook Load (HEC)	1,323 lb. (600 kg)
Unit Weight	3.7 lb. (1.68 kg)
Service Life	4 years after first use

✓ **TALON LC Keeperless Cargo Hooks** — Our signature cargo hook design for the EC135 aircraft features a modified housing designed to fit the aircraft's existing beam. It can handle a wide variety of load ring sizes and styles while eliminating the possibility of losing a load that inadvertently gets past the keeper. The lock indicator window on the back of the hook gives ground crew personnel an easy visual signal that the hook is locked, and the almost 90° angle of the hook opening makes for easier loading and unloading.

✓ **HEC Y-Rope** — Onboard has certified a full suite of personal carry device system (PCDS) equipment as part of this STC. The Y-rope must be purchased with the dual hook kit from Onboard, as it dictates proper loading of the hooks during operation. The remaining PCDS equipment may be purchased from Onboard, or alternative approved PCDS equipment may be used.

✓ **Load Capacity** — With the Y-rope attached to both cargo hooks, the dual cargo hook system load limit is 1,323 lb. (600 kg) for both HEC and non-HEC (NHEC) missions. When an NHEC load is attached to only the primary cargo hook, the normal aircraft load limit applies.

✓ **HEC Longlines & Accessories** — Onboard can also provide other essential components for properly rigging your aircraft to carry human external cargo, such as rigging plates, longlines, weight bags, lanyards, and carabiners.

Contact Us

Please contact one of the sales staff team members listed on the back of this brochure with any questions.

Figure 2 — Our dual cargo hook systems requires one of our Y-Rope assemblies (#1) for HEC missions. We also offer optional HEC Longline Kits that include an HEC Longline (#2) along with the Y-Rope, a 25-lb. weight bag (#3), a rigging plate (#4), and a lanyard (#5) to connect to your locally-approved PCDS harness.

Description	P/N	Weight
Y-rope	490-022-00	3.7 lb. (1.68 kg)
Carabiner	530-031-00	0.7 lb. (0.32 kg)
Rigging Plate	292-107-00	1.75 lb. (0.79 kg)
Weight Bag	490-017-00	27.1 lb. (12.30 kg)
Lanyard	490-018-00	3.25 lb. (1.47 kg)
Choice of Longline (see Table 3.2 for standard lengths)		

Description	Kit P/N
50-ft (15.24m) Long Line	200-476-05
60-ft (18.29m) Long Line	200-476-06
70-ft (21.34m) Long Line	200-476-07
80-ft (24.38m) Long Line	200-476-08
100-ft (30.48m) Long Line	200-476-10
120-ft (36.58m) Long Line	200-476-12
150-ft (45.72m) Long Line	200-476-15

Custom lengths also available; please visit website for current pricing



Program Contacts

Brendan Fitzpatrick

Business Development Manager

Phone: +1.360.546.3072, ext. 136

Mobile: +1.360.989.5624

Email: brendan@onboardsystems.com

Sergio Gemoets

Key Accounts Manager,

US & Latin America

Phone: +1.360.546.3072, ext. 142

Email: sergio@onboardsystems.com

Brandon Lowe

Aftermarket Sales Manager,
Canada & International

Phone: +1.360.546.3072, ext. 218

Email: brandon.lowe@onboardsystems.com




Onboard Systems International, LLC

13915 NW 3rd Court
Vancouver, WA 98685
United States

 +1.360.546.3072

 +1.360.546.3073

 sales@onboardsystems.com

www.OnboardSystems.com